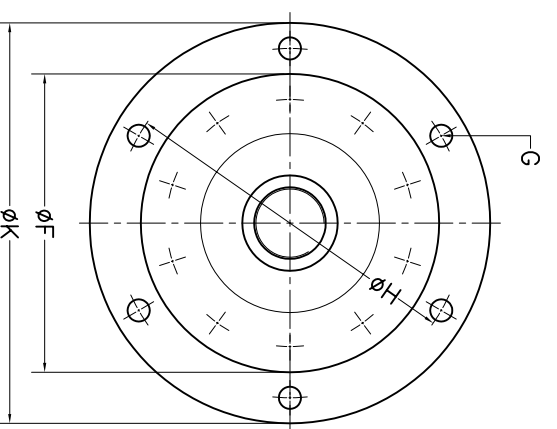
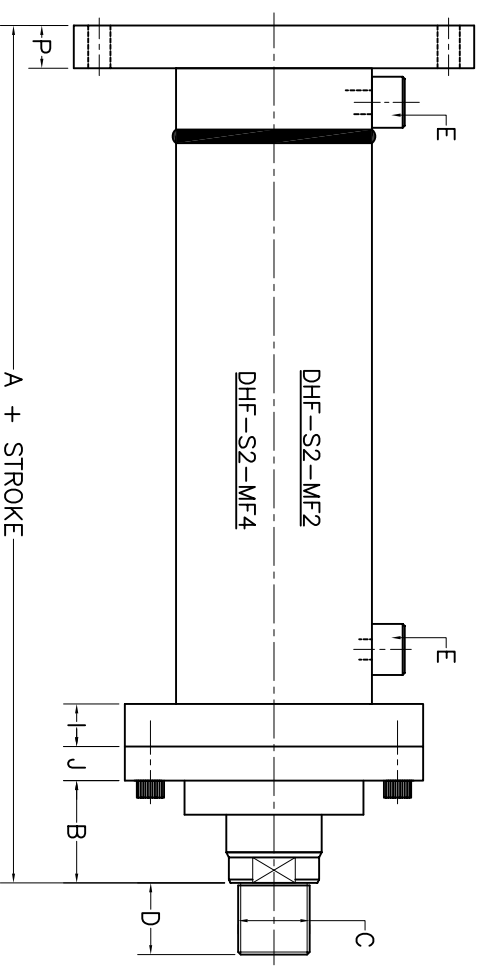


DHF-S2-MF2



DHF-S2-MF4



BORE	ROD	A	B	C	D	E (SOCKET)	F	G (No. of Holes & Drill Dia.)	H	I	J	K	L	M (No. of Holes & Drill Dia.)	N	P
50	30	231	47	M24x3	24	3/8" BSP	110	4~Φ13	135	20	15	160	160x160	4~Φ13	170	20
63	40	255	55	M27x2	30	3/8" BSP	125	4~Φ13	150	25	15	175	175x175	4~Φ13	185	25
80	50	266	55	M39x2	40	1/2" BSP	145	4~Φ13	173	25	15	200	200x200	4~Φ13	215	25
100	56	289	60	M42x2	42	1/2" BSP	175	6~Φ13	205	25	20	235	235x235	4~Φ13	255	25
100	63	289	60	M42x2	42	1/2" BSP	175	6~Φ13	205	25	20	235	235x235	4~Φ13	255	25
110	63	314	60	M48x2	48	1/2" BSP	190	6~Φ15	225	28	25	260	260x260	4~Φ15	280	28
110	70	314	60	M48x2	48	1/2" BSP	190	6~Φ15	225	28	25	260	260x260	4~Φ15	280	28
125	70	350	70	M56x2	56	3/4" BSP	210	6~Φ17	245	30	30	280	280x280	4~Φ17	305	30
125	90	350	70	M56x2	56	3/4" BSP	210	6~Φ17	245	30	30	280	280x280	4~Φ17	305	30
150	90	383	70	M64x2	64	3/4" BSP	255	8~Φ22	300	35	35	345	345x345	4~Φ22	370	35
150	110	383	70	M64x2	64	3/4" BSP	255	8~Φ22	300	35	35	345	345x345	4~Φ22	370	35
200	100	455	85	M85x2	85	1" BSP	295	8~Φ22	340	40	40	385	385x385	4~Φ22	420	40
200	120	455	85	M85x2	85	1" BSP	295	8~Φ22	340	40	40	385	385x385	4~Φ22	420	40

REAR FLANGE MOUNTING CYLINDER